

Talent Insights for KeHE Distributors

How real-time talent insights can help KeHE Distributors build an industry-leading workforce.

Read on for the latest talent trends in the food distribution industry.

Key roles are changing in the food distribution industry

Fastest-growing roles

(role prevalence between 2011–2021*)

- Talent Acquisition Partner
- Category Management Assistant
- Cyber Security Analyst
- Cross Dock Coordinator
- Software Engineer

Fastest-declining roles

(role prevalence between 2011–2021*)

- Facility Safety Manager
- Crew Manager
- Transportation Router
- Store Clerk
- Fresh Sales Consultant

Eightfold's Talent Intelligence Platform identifies best-fit talent for open roles and broadens the talent pool by revealing candidates and employees with relevant experience.

* With Eightfold's Talent Intelligence Platform this data can be analyzed along much shorter timeframes based on how customers configure the assessment or analysis period.



How KeHE Distributors skills in the workforce compare to global benchmarks

Fastest growing skills within KeHE Distributors:

- Microsoft Power BI
- Angular
- Tableau
- Data Analytics
- Angular JS

Fastest-growing skills within the food distribution industry:

- Digital Marketing
- Analytics
- Talent Acquisition
- Python
- Social Media Marketing

Eightfold's Talent Intelligence Platform surfaces the rising skills you need to stay at the top of your industry. By identifying these, you can focus on finding the people with the right skills and upskilling and reskilling your current workforce with personalized training and career paths.

81%

more internal hires at a communications company after adopting the Eightfold Talent Intelligence Platform.

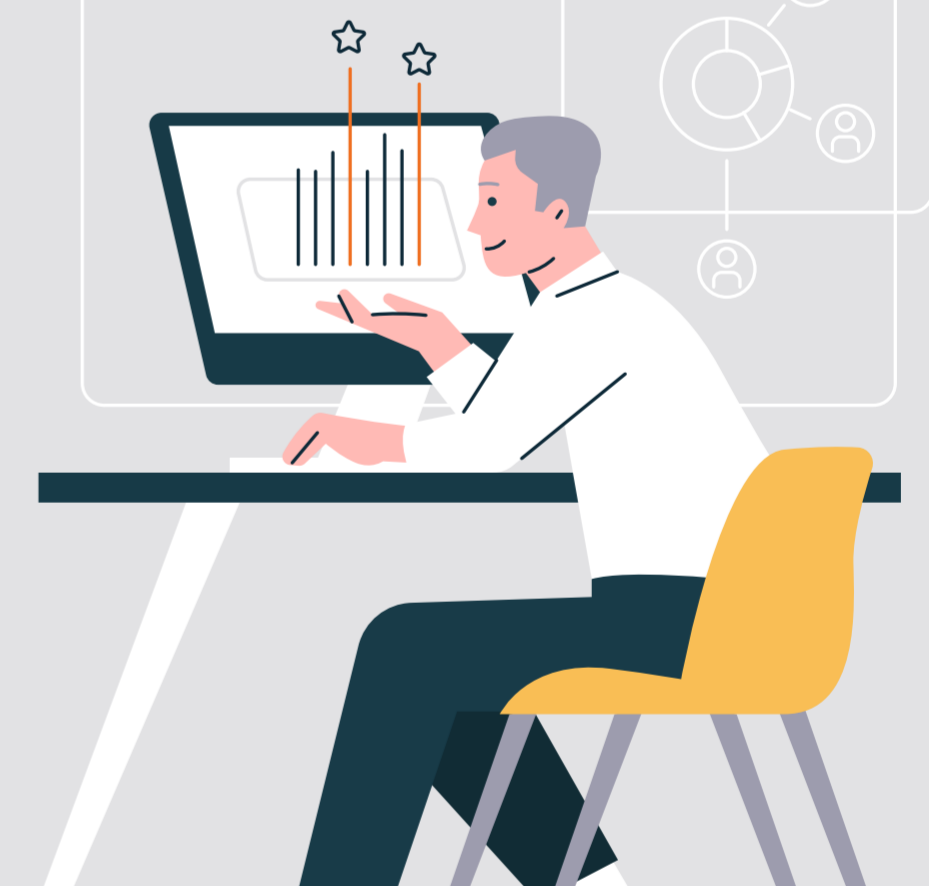
Opportunities for KeHE Distributors to advance skills

The food distribution industry as a whole has a greater number of employees with these proficiencies:

- Inventory Control
- Process Improvement
- Distribution Center Operations
- Warehousing
- Supply Chain Graphics



Eightfold AI increases job applications by integrating with your career site to show candidates which jobs they're qualified for, even ones they may have never considered.



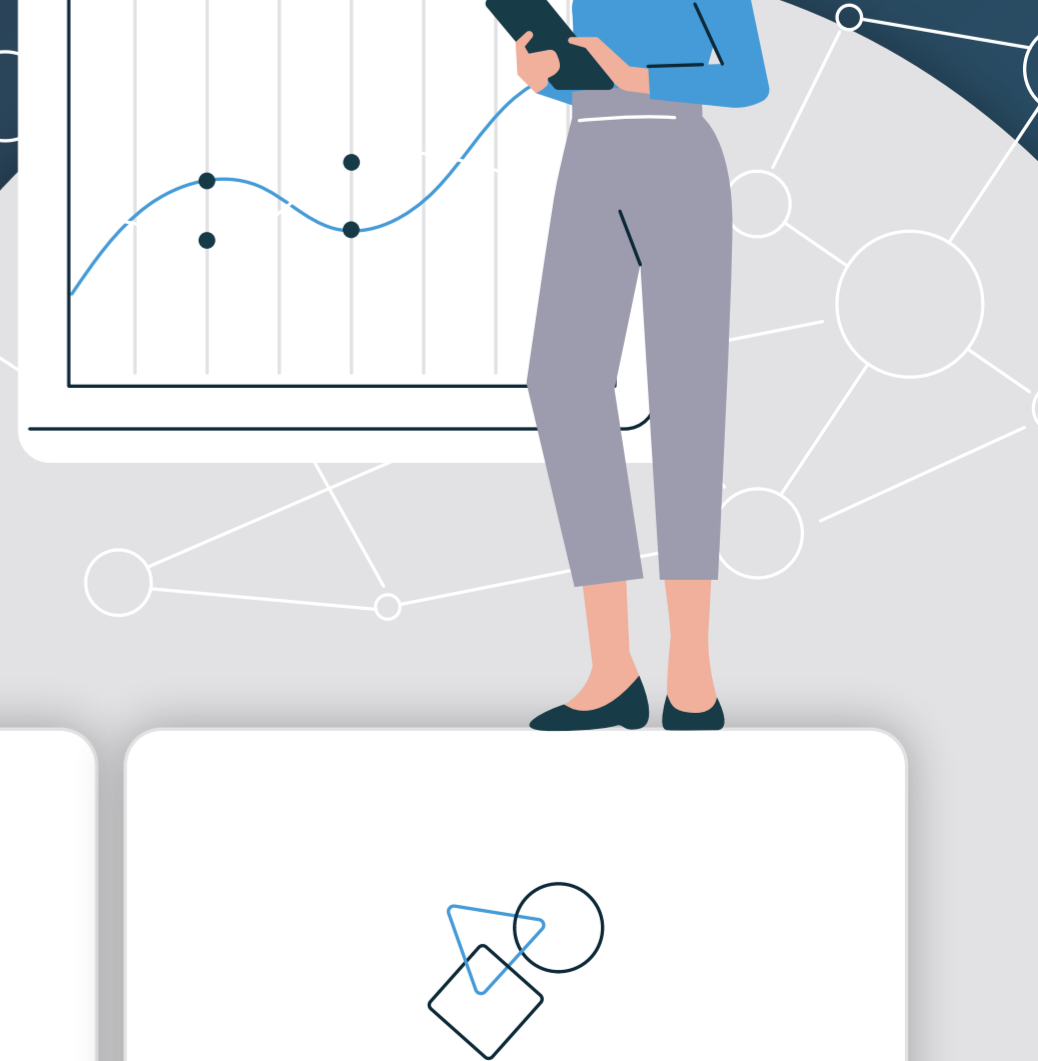
How could hiring more workers with these skills strengthen KeHE Distributors overall talent strategy?

4 ways Eightfold can help KeHE Distributors build a stronger workforce

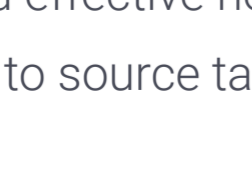
Eightfold's deep-learning AI tracks more than 1.4 million skills by analyzing over 1.5 billion talent profiles in real time. Using Eightfold AI's advanced intelligence platform, With Eightfold, HR leaders can understand everything talent brings to the table to make informed decisions and acquire key skills.

- 1 Attract a larger, more diverse talent pool**
Find highly skilled people faster who have the advanced technical experience you need.
- 2 Close the skills gap**
AI helps find the best candidates with the aptitude to develop the skills you need in the future.
- 3 Improve retention**
Help every employee grow with personalized upskilling, reskilling, and career opportunities.
- 4 Transform your talent strategy**
Make data-driven talent decisions to optimize the KeHE Distributors workforce.

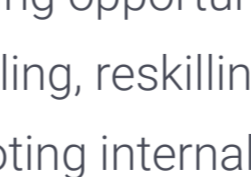
Outpace industry trends in hiring and retention by gaining more insights and visibility into your talent strategy. Building a stronger workforce requires an AI-driven talent intelligence platform that does more.



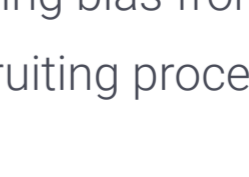
Eightfold AI:



Delivers an efficient and effective new way to source talent



Increases retention by identifying opportunities for upskilling, reskilling, and promoting internal talent



Increases diversity by removing bias from the recruiting process

Enterprises can gain a remarkable competitive advantage in talent management with Eightfold AI.

Ready to learn more?

Talk to me for more info



Tim Butler
tbutler@eightfold.ai
(612) 978-1714